

Preliminary Specifications Subject to Change without Notice

DESCRIPTION

The JW5392-C267 is a monolithic buck switching regulators based on I2 architecture for fast transient response. Operating with an input range of 4.4V~18V, The JW5392-C267 delivers 2A of continuous output current with two integrated N-Channel MOSFETs. The internal synchronous power switches provide high efficiency without the use of an external Schottky diode. At light loads, JW5392-C267 operates in low frequency to maintain high efficiency.

The JW5392-C267 guarantees robustness with output short protection, thermal protection, current run-away protection and input under voltage lockout.

The JW5392-C267 is available in SOT563 package, which provide a compact solution with minimal external components.

Company's Logo is Protected, "JW" and "JOULWATT" are Registered Trademarks of Joulwatt Technology Co., Ltd.

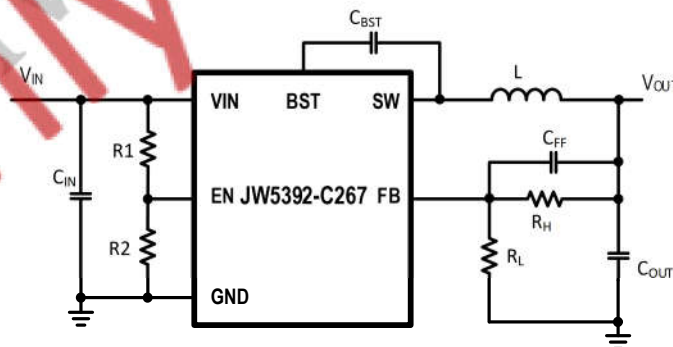
FEATURES

- 4.4V to 18V Operating Input Range
- 2A Output Current
- Up to 95% Efficiency
- PFM Mode at Light Load
- 600kHz Switching Frequency
- Internal Soft-start
- Input Under Voltage Lockout
- Current Run-away Protection
- Output Short Protection
- Thermal Protection
- Available in SOT563 Package

APPLICATIONS

- Distributed Power Systems
- Networking Systems
- FPGA, DSP, ASIC Power Supplies
- Green Electronics/ Appliances
- Notebook Computers

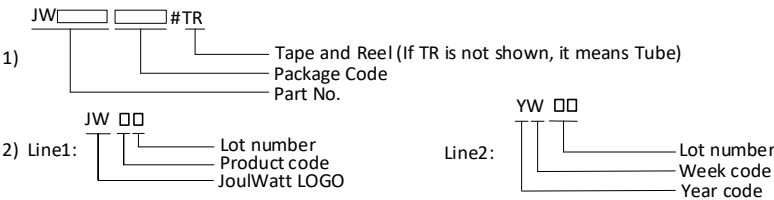
TYPICAL APPLICATION



ORDER INFORMATION

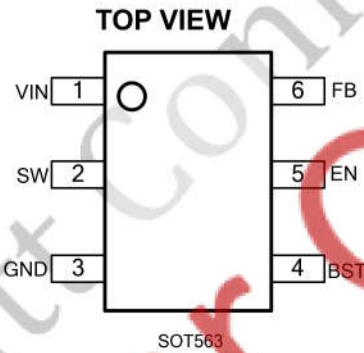
DEVICE ¹⁾	PACKAGE	TOP MARKING ²⁾	ENVIRONMENTAL ³⁾
JW5392-C267SOTI#TR	SOT563	JWk□ YW□□	Green

Notes :



3) All JoulWatt products are packaged with Pb-free and Halogen-free materials and compliant to RoHS standards.

PIN CONFIGURATION



ABSOLUTE MAXIMUM RATING¹⁾

VIN, EN Pin	-0.3V to 20V
SW Pin	-0.3V(-5V for 10ns) to 20V(22V for 10ns)
BST Pin	SW-0.3V to SW+4V (+4.8V for 10ns)
All other Pins	-0.3V to 4V
Junction Temperature ²⁾	150°C
Lead Temperature	260°C
Storage Temperature	-65°C to +150°C

RECOMMENDED OPERATING CONDITIONS³⁾

Input Voltage V_{IN}	4.4V to 18V
Output Voltage V_{OUT}	0.8V to $V_{IN} \cdot D_{max}$
Operating Junction Temperature	-40°C to +125°C

THERMAL PERFORMANCE⁴⁾

	θ_{JA}	θ_{JC}
SOT563	145	45°C/W

Notes:

- 1) Exceeding these ratings may damage the device. These stress ratings do not imply function operation of the device at any other conditions beyond those indicated under RECOMMENDED OPERATING CONDITIONS.
- 2) The JW5392-C267 includes thermal protection that is intended to protect the device in overload conditions. Continuous operation over the specified absolute maximum operating junction temperature may damage the device.
- 3) The device is not guaranteed to function outside of its operating conditions.
- 4) Measured on JESD51-7, 4-layer PC

ELECTRICAL CHARACTERISTICS

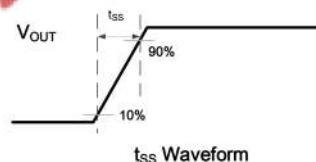
$V_{IN}=12V$, $T_J=25^{\circ}C$, unless otherwise stated.

Advance Information, not production data, subject to change without notice.

ITEM	SYMBOL	CONDITIONS	MIN.	TYP.	MAX.	UNIT
V_{IN} Under Voltage Lock-out Threshold	V_{IN_MIN}	V_{IN} rising	4.0	4.2	4.4	V
V_{IN} Under Voltage Lock-out Hysteresis	$V_{IN_MIN_HYST}$			300		mV
Shutdown Supply Current	I_{SD}	$V_{EN}=0V$			1	μA
Supply Current	I_Q	$V_{EN}=5V$, $V_{FB}=1.2V$		130	200	μA
Feedback Voltage	V_{FB}	$4.4 \leq V_{IN} \leq 18V$	792	800	808	mV
		$T_J=-40^{\circ}C \sim 125^{\circ}C$	784	800	816	mV
FB Leakage Current	I_{FB}	$V_{FB}=0.85V$			100	nA
Top Switch Resistance	$R_{DS(ON)T}$			85		m Ω
Bottom Switch Resistance	$R_{DS(ON)B}$			50		m Ω
Top Switch Leakage Current	I_{LEAK_TOP}	$V_{IN}=18V$, $V_{EN}=0V$, $V_{SW}=0V$			1	μA
Bottom Switch Leakage Current	I_{LEAK_BOT}	$V_{IN}=18V$, $V_{EN}=0V$, $V_{SW}=18V$			4	μA
Bottom Switch Current Limit	I_{LIM_BOT}	JW5392-C267	2.3	2.8	3.3	A
Minimum On Time ⁵⁾	T_{ON_MIN}			100		ns
Minimum Off Time	T_{OFF_MIN}	$V_{FB}=0.4V$		170		ns
Maximum On Time	T_{ON_Max}			4		μs
EN Rising Threshold	V_{EN_H}	V_{EN} rising	1.1	1.2	1.3	V
EN Falling Threshold	V_{EN_L}	V_{EN} falling	0.98	1.05	1.12	V
Switching Frequency	F_{SW}		480	600	720	kHz
Soft-Start Period ⁵⁾⁶⁾	t_{SS}		1	1.4	2	ms
Thermal Shutdown ⁵⁾	T_{TSD}			160		$^{\circ}C$
Thermal Shutdown Hysteresis ⁵⁾	T_{TSD_HYST}			20		$^{\circ}C$

Notes:

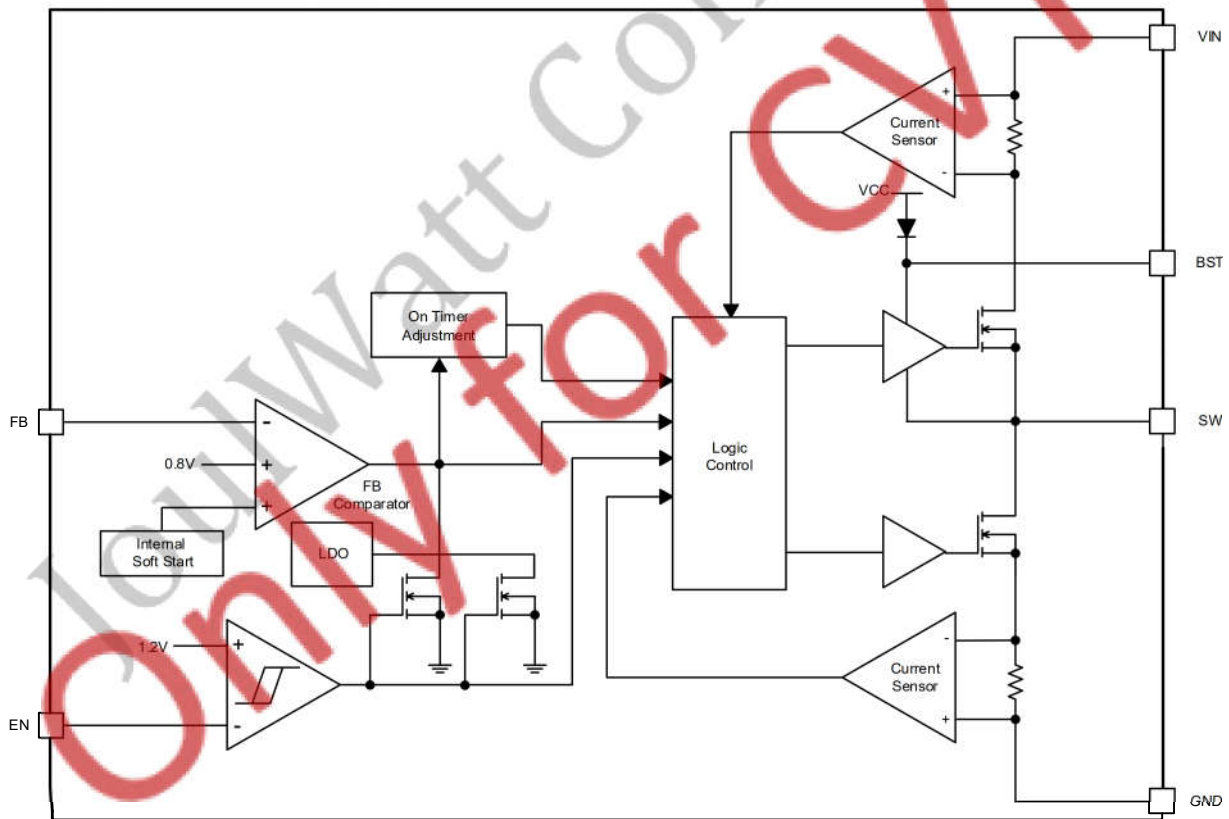
- 5) Guaranteed by design.
6) Soft-Start Period is tested from 10% to 90% of the steady state output voltage.



PIN DESCRIPTION

PIN SOT563	NAME	DESCRIPTION
1	VIN	Input voltage pin. VIN supplies power to the IC. Connect a 4.4V to 18V supply to VIN and bypass VIN to GND with a suitably large capacitor to eliminate noise on the input to the IC.
2	SW	SW is the switching node that supplies power to the output. Connect the output LC filter from SW to the output load.
3	GND	Ground pin.
4	BST	Connect a 0.1μF capacitor between BST and SW pin to supply current for the top switch driver.
5	EN	Drive EN pin high to turn on the regulator and low to turn off the regulator.
6	FB	Output feedback pin. FB senses the output voltage and is regulated by the control loop to 0.8 V. Connect a resistive divider at FB.

BLOCK DIAGRAM

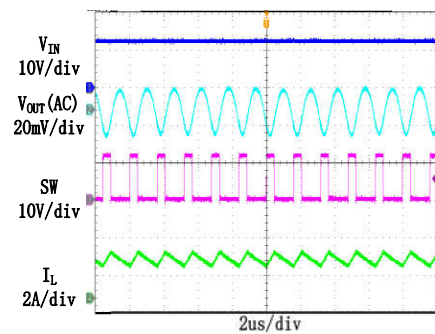


TYPICAL PERFORMANCE CHARACTERISTICS

$V_{IN}=12V$, $V_{OUT}=3.3V$, $L=4.7\mu H$, $C_{OUT}=22\mu F$, $C_{FF}=22pF$, $T_A=+25^{\circ}C$, unless otherwise noted

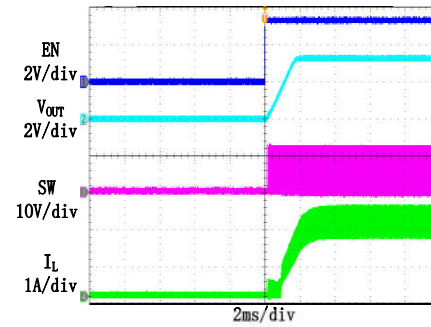
Steady State Test

$V_{IN}=12V$, $V_{OUT}=3.3V$
 $I_{OUT}=2A$



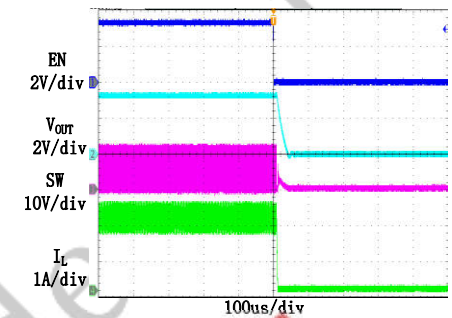
Startup through Enable

$V_{IN}=12V$, $V_{OUT}=3.3V$
 $I_{OUT}=2A$ (Resistive load)



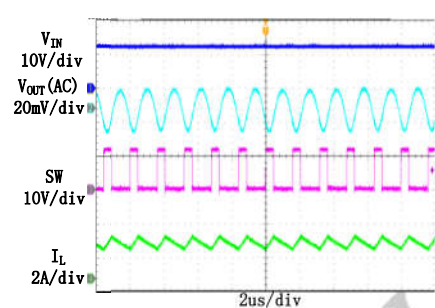
Shutdown through Enable

$V_{IN}=12V$, $V_{OUT}=3.3V$
 $I_{OUT}=2A$ (Resistive load)



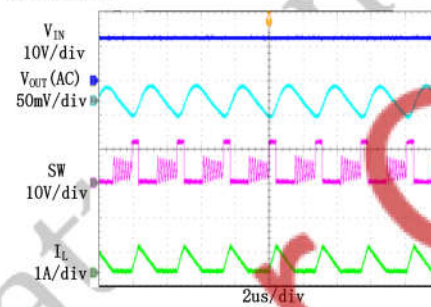
Heavy Load Operation

2A LOAD



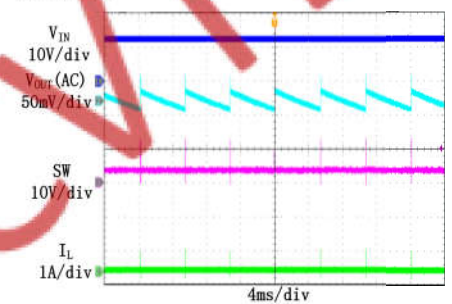
Medium Load Operation

0.2A LOAD



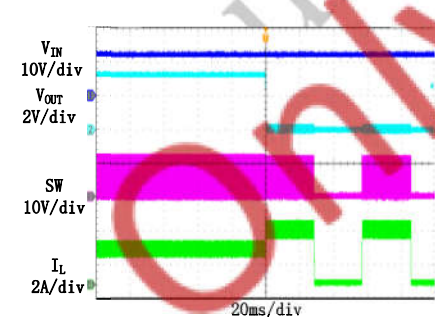
Light Load Operation

0 A LOAD



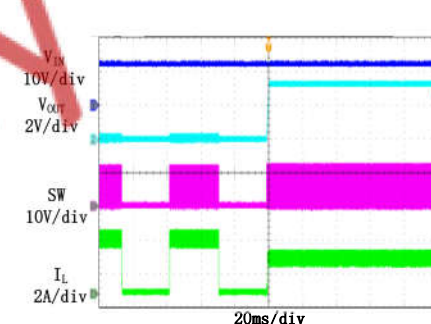
Short Circuit Protection

$V_{IN}=12V$, $V_{OUT}=3.3V$
 $I_{OUT}=2A$ - Short



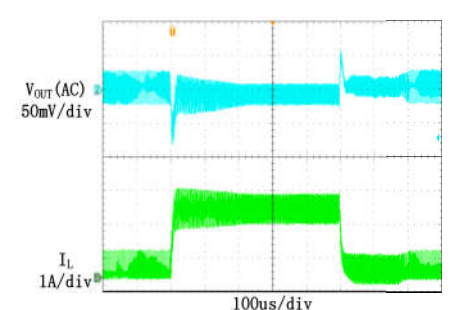
Short Circuit Recovery

$V_{IN}=12V$, $V_{OUT}=3.3V$
 I_{OUT} = Short-2A

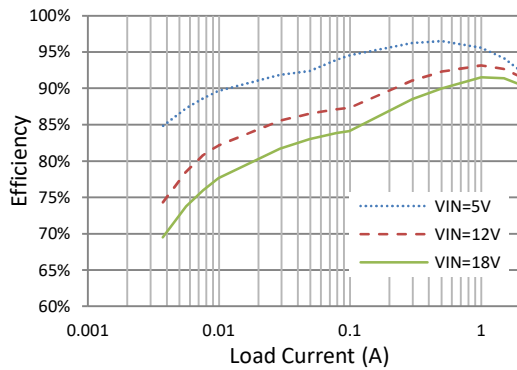


Load Transient

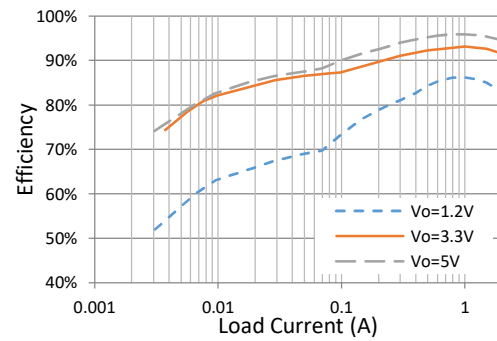
$C_{FF}=47pF$
 0.2A LOAD \rightarrow 2A LOAD \rightarrow 0.2A LOAD



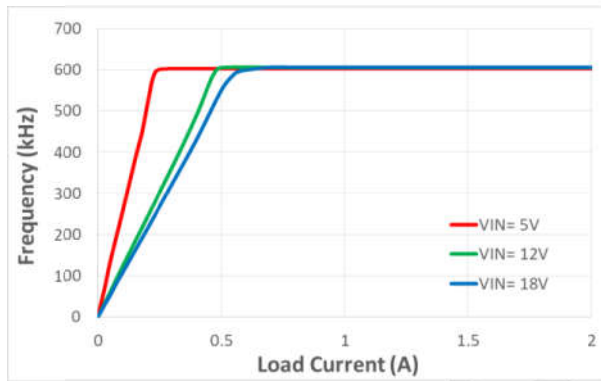
TYPICAL PERFORMANCE CHARACTERISTICS



Efficiency vs. Load Current

 $(V_{OUT}=3.3V, L=4.7\mu H)$ 

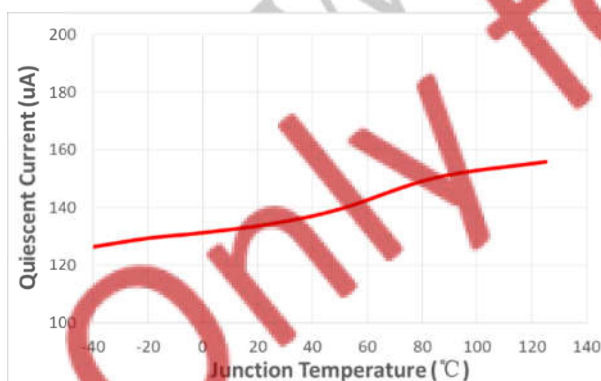
Efficiency vs. Load Current

 $(V_{IN}=12V)$ 

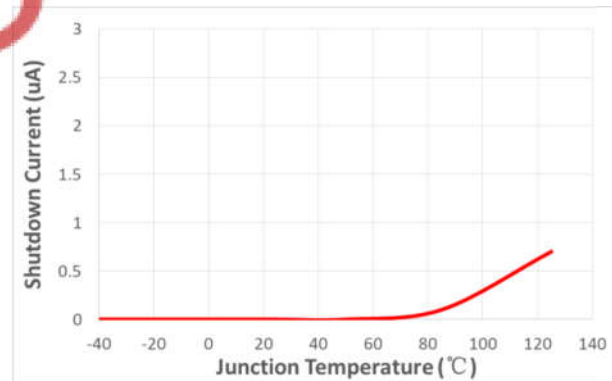
Frequency vs Load Current

 $(V_{OUT}=3.3V, L=4.7\mu H)$ 

Load Regulation vs Load Current

 $(V_{OUT}=3.3V, L=4.7\mu H)$ 

Supply Current vs Junction Temperature



Shutdown Current vs Junction Temperature

FUNCTIONAL DESCRIPTION

The JW5392-C267 is an synchronous step-down regulators based on I2 control architecture. It regulates input voltages from 4.4V to 18V down to an output voltage as low as 0.8V, and is capable of supplying up to 2A of load current.

Shut-Down Mode

The regulator shuts down when voltage at EN pin is driven below 0.4V. The entire regulator is off and the supply current consumed by the regulator drops below 1 μ A.

Power Switch

N-Channel MOSFET switches are integrated on the JW5392-C267 to down convert the input voltage to the regulated output voltage. Since the top MOSFET needs a gate voltage great than the input voltage, a boost capacitor connected between BST and SW pins is required to drive the gate of the top switch. The boost capacitor is charged by the internal 3.3V rail when SW is low.

PFM Operation

At light load condition, JW5392-C267 is configured to work in PFM mode to optimize the efficiency. When the load decreases, the inductor current will decrease as well. Once the inductor current reaches zero, the part transitions from CCM to PFM mode.

In PFM operation, the high side MOSFET is turned off by the peak current reference and the low side MOSFET turns on until the inductor current reaches zero. At this time, the output voltage is still higher than the target value which causes the internal COMP voltage lower than a clamp value, and the high side MOSFET is not allowed to turn on until the COMP voltage rises

above its clamp voltage.

V_{IN} Under-Voltage Protection

A resistive divider can be connected between V_{IN} and ground, with the central tap connected to EN, so that when V_{IN} drops to the pre-set value, EN drops below 1.05V to trigger input under voltage lockout protection.

Output Current Run-Away Protection

At start-up, due to the high voltage at input and low voltage at output, current inertia of the output inductor can be easily built up, resulting in a large start-up output current. A valley current limit is designed in JW5392-C267 so that only when output current drops below the valley current limit can the top power switch be turned on. By such control mechanism, the output current at start-up is well controlled.

Output Short Protection

When the output is shorted to ground, the regulator is allowed to switch for 2048 cycles. If the short condition is cleared within this period, then the regulator resumes normal operation. If the short condition is still present after 2048 switching cycles, then no switching is allowed and the regulator enters hiccup mode for 6144 cycles. After the 6144 hiccup cycles, the regulator will try to start-up again. If the short condition still exists after 2048 cycles of switching, the regulator enters hiccup mode. This process of start-up and hiccup iterate itself until the short condition is removed.

Thermal Protection

When the temperature of the regulator rises above 160°C, it is forced into thermal shut-down. Only when core temperature drops below 140°C

can the regulator become active again.

APPLICATION INFORMATION

Output Voltage Set

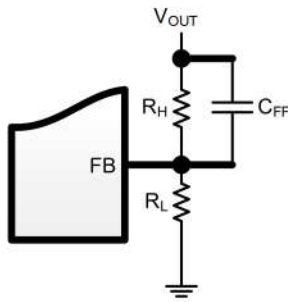
The output voltage is determined by the resistor divider connected at the FB pin, and the voltage ratio is:

$$V_{FB} = V_{OUT} * \frac{R_L}{R_H + R_L}$$

where V_{FB} is the feedback voltage and V_{OUT} is the output voltage.

If R_L is determined, and then R_H can be calculated by:

$$R_H = R_L * \left(\frac{V_{OUT}}{0.8} - 1 \right)$$



Feedforward Capacitor

In order to ensure stability, a feedforward capacitor C_{FF} about dozens of picofarads is needed to be in parallel with R_H .

Input Capacitor

The input capacitor is used to supply the AC input current to the step-down converter and maintaining the DC input voltage. Estimate the RMS current in the input capacitor with:

$$I_{CIN} = I_{OUT} * \sqrt{\frac{V_{OUT}}{V_{IN}} * \left(1 - \frac{V_{OUT}}{V_{IN}} \right)}$$

where I_{OUT} is the load current, V_{OUT} is the output voltage, V_{IN} is the input voltage.

Thus the input capacitor can be calculated by the following equation when the input ripple voltage is determined.

$$C_{IN} = \frac{I_{OUT}}{f_s * \Delta V_{IN}} * \frac{V_{OUT}}{V_{IN}} * \left(1 - \frac{V_{OUT}}{V_{IN}} \right)$$

where C_{IN} is the input capacitance value, f_s is the switching frequency, ΔV_{IN} is the input ripple voltage.

The input capacitor can be electrolytic, tantalum or ceramic. To minimizing the potential noise, a small X5R or X7R ceramic capacitor, i.e. 0.1 μ F, should be placed as close to the IC as possible when using electrolytic capacitors.

A 22 μ F/25V ceramic capacitor is recommended in typical application.

Output Capacitor

The output capacitor is required to maintain the DC output voltage, and the capacitance value determines the output ripple voltage. The output voltage ripple can be calculated by:

$$\Delta V_{OUT} = \frac{V_{OUT}}{f_s * L} * \left(1 - \frac{V_{OUT}}{V_{IN}} \right) * \left(R_{ESR} + \frac{1}{8 * f_s * C_{OUT}} \right)$$

where C_{OUT} is the output capacitance value and R_{ESR} is the equivalent series resistance value of the output capacitor.

The output capacitor can be low ESR electrolytic, tantalum or ceramic, which lower ESR capacitors get lower output ripple voltage.

The output capacitors also affect the system stability and transient response, and a 22 μ F~44 μ F ceramic capacitor is recommended in typical application.

Inductor

The inductor is used to supply constant current to the output load, and the value determines the ripple current which affect the efficiency and the output voltage ripple. The ripple current is typically allowed to be 40% of the maximum switch current limit, and It should be no less than 20% of the maximum current limit. Thus the inductance value can be calculated by:

$$L = \frac{V_{OUT}}{f_s * \Delta I_L} * \left(1 - \frac{V_{OUT}}{V_{IN}}\right)$$

where V_{IN} is the input voltage, V_{OUT} is the output voltage, f_s is the switching frequency, and ΔI_L is the peak-to-peak inductor ripple current.

External Bootstrap Capacitor

The bootstrap capacitor is required to supply voltage to the top switch driver. A 0.1 μ F low ESR ceramic capacitor is recommended to connected to the BST pin and SW pin.

SOT563:

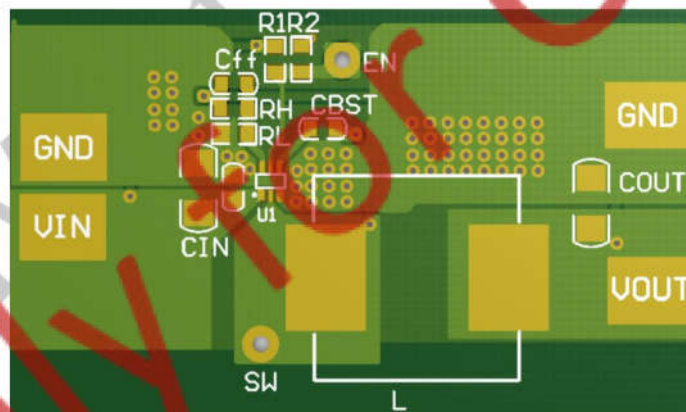


Figure 1. PCB Layout Recommendation

PCB Layout Note

For minimum noise problem and best operating performance, the PCB is preferred to following the guidelines as reference.

1. Place the input decoupling capacitor as close to JW5392-C267 (VIN pin and GND pin) as possible to eliminate noise at the input pin. The loop area formed by input capacitor and GND must be minimized.
2. Put the feedback trace as short as possible, and far away from the inductor and noisy power traces like SW node.
3. The ground plane on the PCB should be as large as possible for better heat dissipation.
4. Keep the switching node SW short to prevent excessive capacitive coupling
5. Make V_{IN} , V_{OUT} and ground bus connections as wide as possible. This reduces any voltage drops on the input or output paths of the converter and maximizes efficiency.

REFERENCE DESIGN

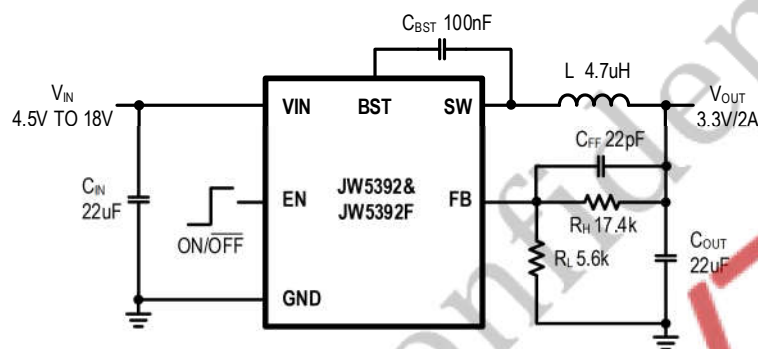
Note: Information in the following reference design sections is not part of JoulWatt component specification. Customers are responsible for determining suitability of components chosen for their purposes and should validate their design implementation to make sure the proper system functionality.

Reference:

V_{IN} : 4.5V~18V

V_{OUT} : 3.3V

I_{LOAD} : 0~2A

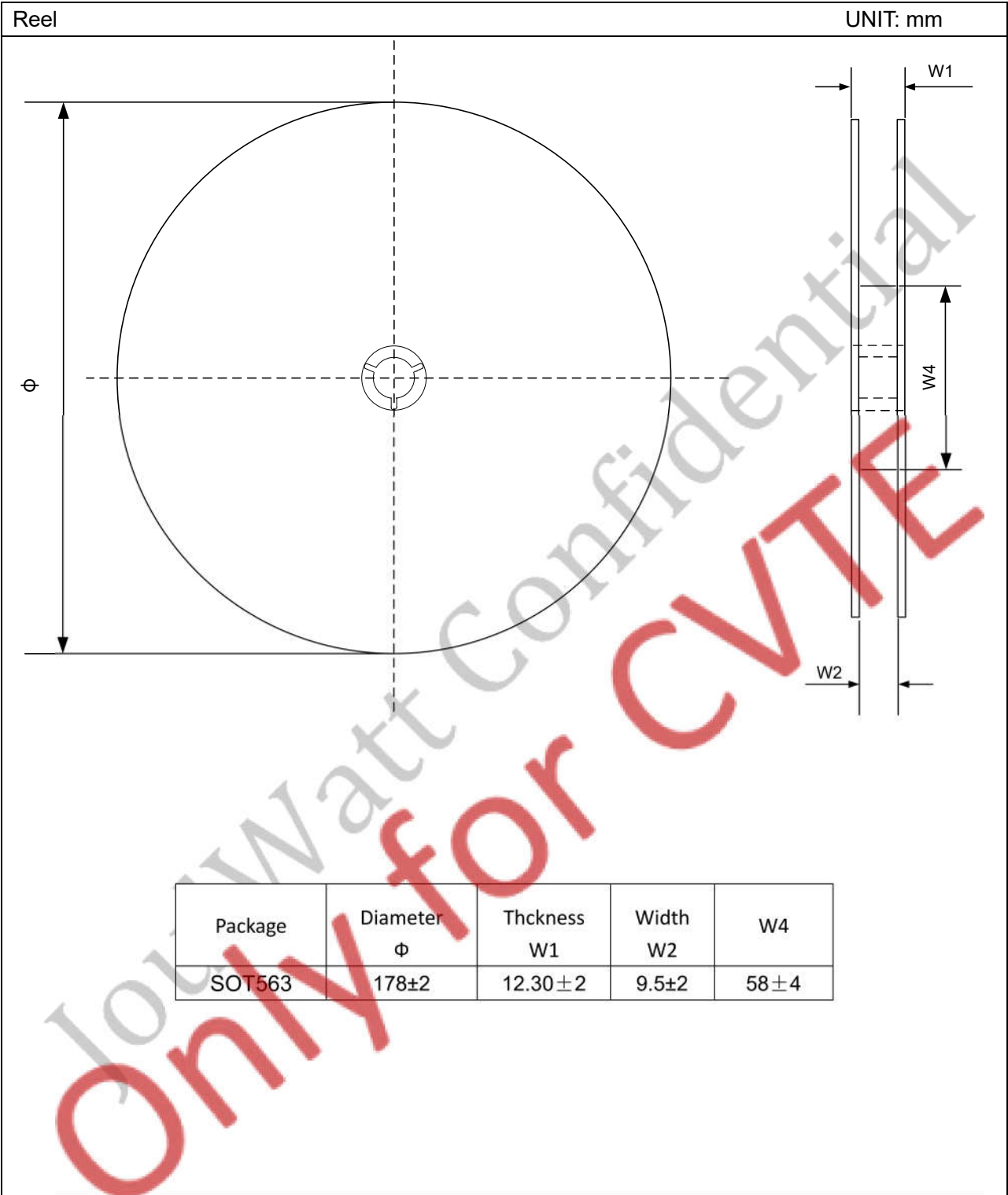
External Components Suggestion ($V_{IN}=12V$):

$V_{OUT}(V)$	$R_L (k\Omega)$	$R_H (k\Omega)$	$C_{FF} (pF)$	$L (\mu H)$	$C_{OUT_NOM} (\mu F)$	$C_{OUT_EFF} (\mu F)$
0.8	NC	10	47	1.5	44	30
1.2	20	10	47	2.2	44	30
1.5	11.2	10	33	2.2	44	30
1.8	8.2	10.2	22	3.3	32	20
2.5	4.7	10	22	4.7	22	10
3.3	5.6	17.4	22	4.7	22	10
5	3.92	20.5	22	6.8	22	10

Notes:

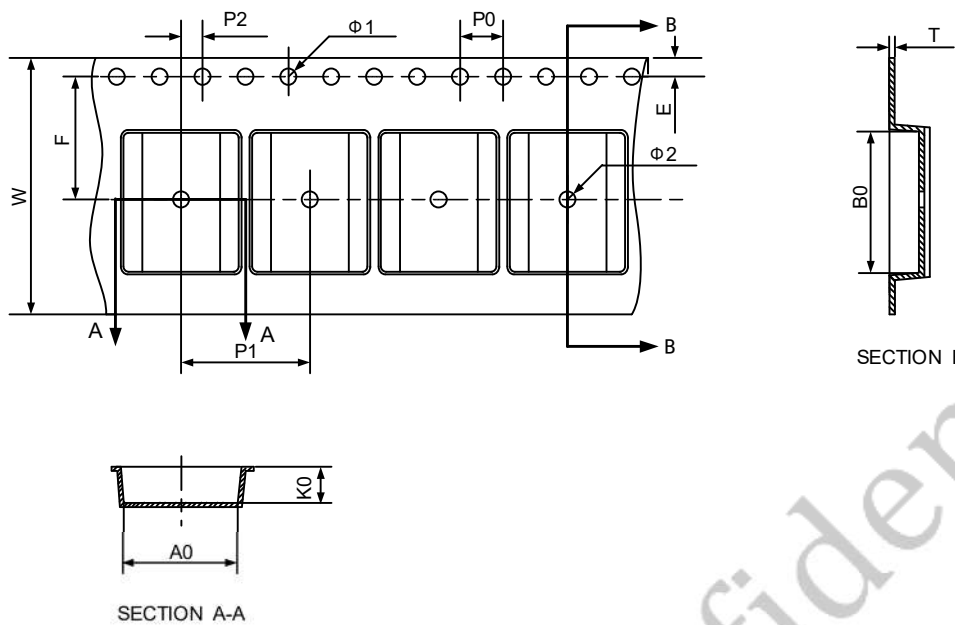
- 1) In order to ensure stability, a feedforward capacitor C_{FF} about dozens of picofarads is needed to be in parallel with R_H .
- 2) Capacitor tolerance and bias voltage de-rating should be considered. The effective capacitance can vary by +20% and -80%. Please refer to the datasheet of the capacitor.
- 3) C_{OUT_NOM} is the minimum nominal capacitance value of C_{OUT} (output capacitance). C_{OUT_EFF} is the minimum effective capacitance value of C_{OUT} .
- 4) The inductance value L should not be too large to ensure that the peak-to-peak inductor ripple current is not less than 20% of the maximum current limit.

TAPE AND REEL INFORMATION



Carrier Tape

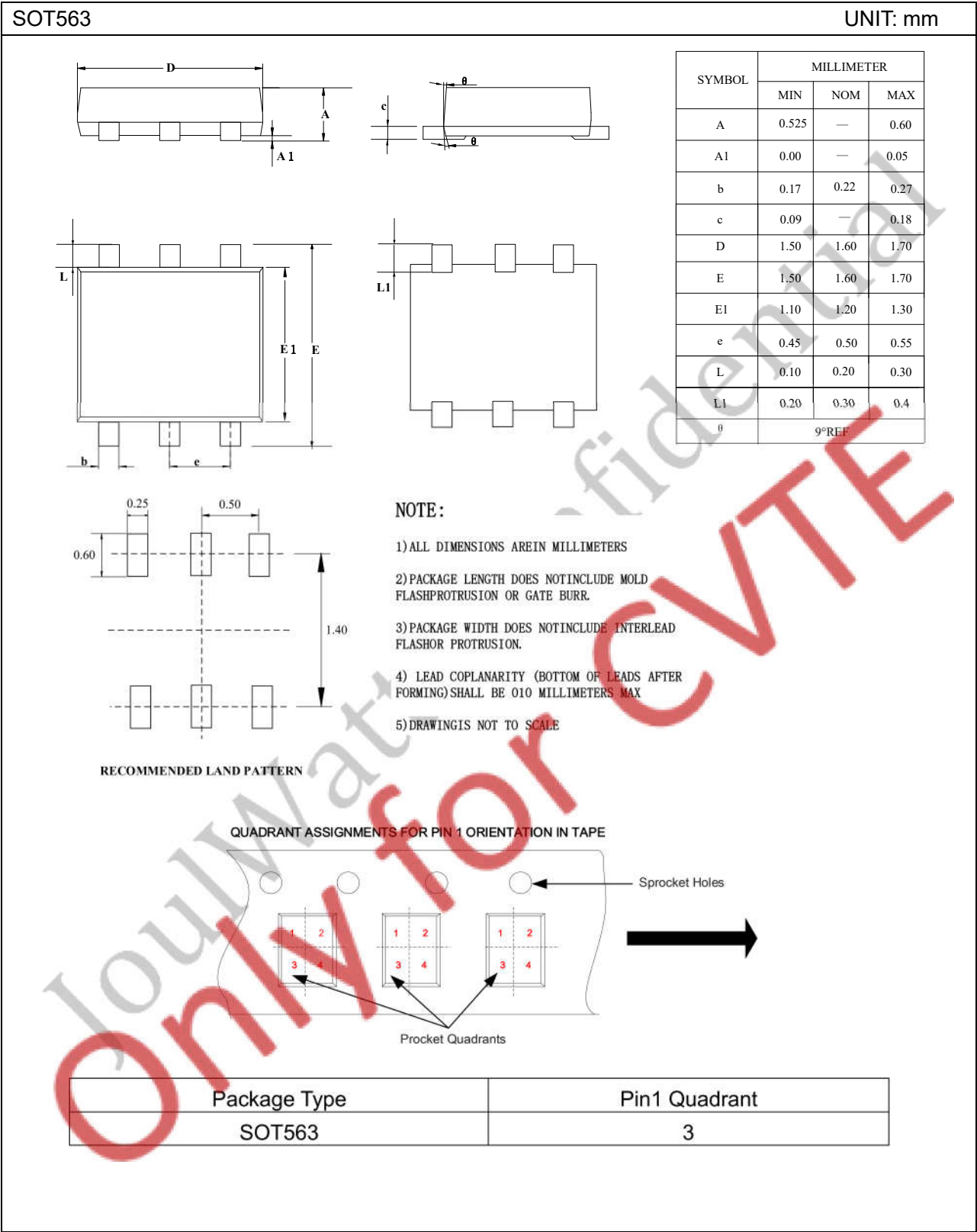
UNIT: mm



- Note :
- 1) The carrier type is black, and colorless transparent.
 - 2) Carrier camber is within 1mm in 100mm.
 - 3) 10 pocket hole pitch cumulative tolerance:±0.20.
 - 4) All dimensions are in mm.

Package	Tape dimensions (mm)											
	P0	P2	P1	A0	B0	W	T	K0	Φ1	Φ2	E	F
SOT563	4.0±0.1	2.0±0.1	4.0±0.1	1.78±0.3	1.78±0.3	8.0±0.3	0.20±0.2	0.69±0.2	1.50min	0.50±0.10	1.75±0.1	3.50±0.10

PACKAGE OUTLINE



IMPORTANT NOTICE

- Joulwatt Technology Co.,Ltd reserves the right to make modifications, enhancements, improvements, corrections or other changes without further notice to this document and any product described herein.
- Any unauthorized redistribution or copy of this document for any purpose is strictly forbidden.
- Joulwatt Technology Co.,Ltd does not warrant or accept any liability whatsoever in respect of any products purchased through unauthorized sales channel.
- JOULWATT TECHNOLOGY CO.,LTD PROVIDES TECHNICAL AND RELIABILITY DATA (INCLUDING DATASHEETS), DESIGN RESOURCES (INCLUDING REFERENCE DESIGNS), APPLICATION OR OTHER DESIGN ADVICE, SAFETY INFORMATION AND OTHER RESOURCES, AND DISCLAIMS ALL WARRANTIES, EXPRESS AND IMPLIED, INCLUDING WITHOUT LIMITATION ANY IMPLIED WARRANTIES OF MERCHANTABILITY, FITNESS FOR A PARTICULAR PURPOSE OR NON-INFRINGEMENT OF THIRD PARTY INTELLECTUAL PROPERTY RIGHTS.

Copyright © 2021 JoulWatt

All rights are reserved by Joulwatt Technology Co.,Ltd